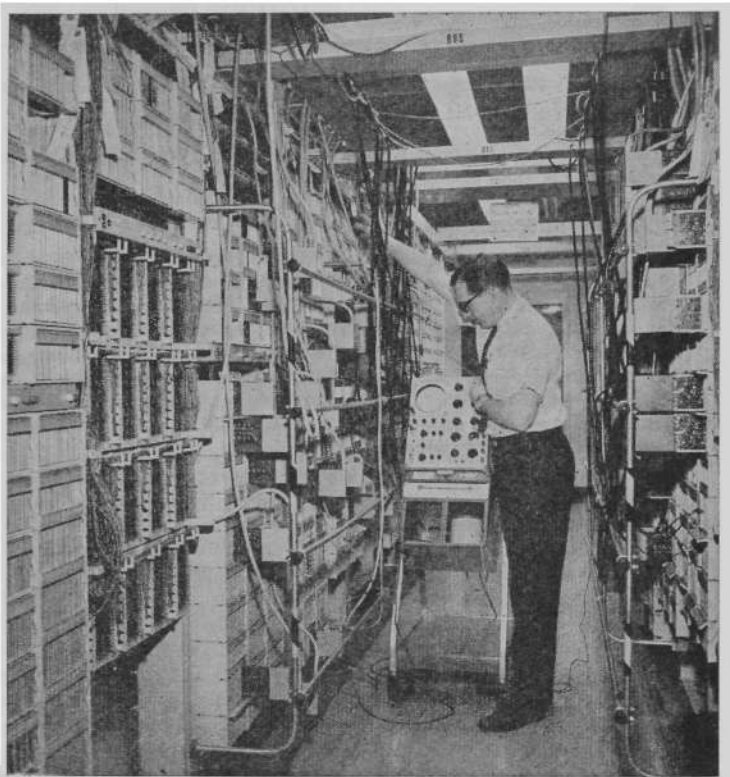


The introduction of the Electronic Switching System is the most important technological advance in telephony in Canada since the early 1920s—it not only offers a great variety of new telephone services today but is capable of providing future services not yet dreamed of.

A technician checks the central control section of the Montreal ESS, which co-ordinates and commands all system operations. →



Miniaturization is of great importance in the design of the System, the space requirement for which is about one fifth that of the replaced system.

← High-power magnification equipment is used to test microcircuits prior to mounting on a 'header' $\frac{3}{8}$ " in diameter.



A pencil points out the size of these minute circuits. →

